

# MONTHLY MEMBERSHIP PROGRESS REPORT

District 31 L

Results as of: 6/30/2024

GMT:

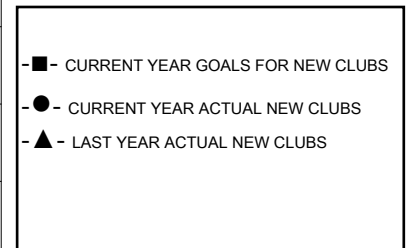
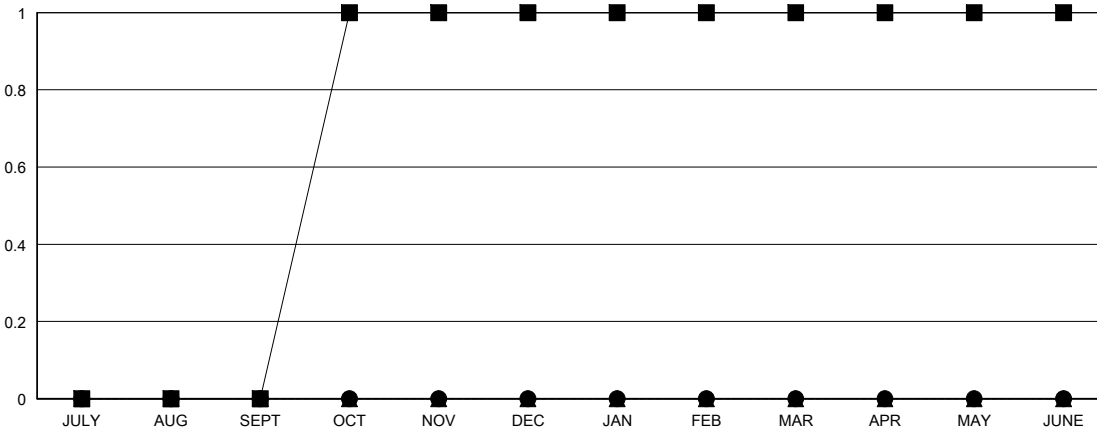
LOCATION NORTH CAROLINA

GMT CA

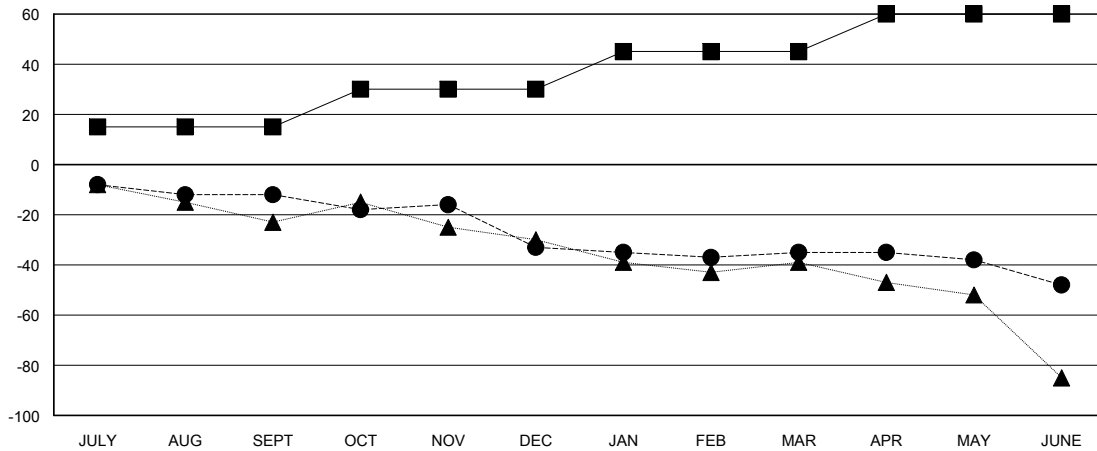
Clubs			
RESULTS FOR 2023-2024			
QUARTER	NEW CLUB GOAL	NEW CLUBS	DROPPED CLUBS
JULY/AUG/SEPT	0	0	2
OCT/NOV/DEC	1	0	1
JAN/FEB/MAR	0	0	0
APR/MAY/JUNE	0	0	0

Members			
RESULTS FOR 2023-2024			
QUARTER	MEMBER GROWTH NET GOAL	MEMBER GROWTH ACTUAL	DROPPED MEMBERS ACTUAL (including transfers)
JULY/AUG/SEPT	15	24	31
OCT/NOV/DEC	15	18	39
JAN/FEB/MAR	15	22	21
APR/MAY/JUNE	15	16	28

GOALS AND ACTUAL NEW CLUBS CUMULATIVE



GOALS AND ACTUAL MEMBERS CUMULATIVE



<b>DROPPED CLUBS: 3</b>	23 CLUBS OF 49 ADDED 1 OR MORE NEW MEMBERS	<b>GENDER DISTRIBUTION</b>	
		MALE 414 (60.17%)	FEMALE 274 (39.83%)
<b>DROPPED MEMBERS</b>		<a href="#">CLICK HERE FOR CUMULATIVE MEMBERSHIP DATA</a>	TOTAL FAMILY UNIT MEMBERS 165
DECEASED 22	CLUB CANCELLED 13		FAMILY MEMBERS PAYING HALF DUES 85
OTHER 84	TOTAL 119		